

FEATURES

- Solid and compact design
Aluminium die-casting housing and powder coating.
- Bolts on visual position indicator
- Quick-set™ cam
Spring loaded splined cam.
No need to adjust again after initial setting.
Easy setting without tool
- Dual cable entries
2 x 1/2 NPT(Standard)
M20,PG13.5,PF1/2",PT1/2".(Option)
- Captive cover bolts
No worry to loose bolts while cover open.
- Easy mounting bracket
NAMUR standard stainless steel shaft and bracket.



SPECIFICATION	STANDARD	OPTION	MATERIAL	
Enclosure	Weatherproof IP67/NEMA4&4X	IP 68	Housing cover&body	Aluminium die casting
Ambient temperature	-20°C ~ 80°C		Shaft	Stainless steel
Conduit entries	Two NPT1/2"	Two PF1/2",PT1/2" M20,PG13.5	Indicator cover	Polycarbonate
Terminal Strips	8 points (0.08-2.5mm ²)		Indicator	ABS/Polycarbonate
Position indicator	0 ~ 90° (90° turn free join) close:red open:yellow	0 ~ 90° close:red open:green	Cam	Polycarbonate
Switches	Mechanical switch x2 proximity sensor x2		Spring	Stainless steel
External coating	Polyester powder coating(black)	Nylon others on request red,green,blue, yellow,silver,	Housing cover bolt	Stainless steel
Shaft	Standard shaft(83mm/16mm)	Option shaft(FREE)	O -ring	NBR
			Bushing	Bronze
			E-ring(shaft)	Stainless steel
			Earth lug	Stainless steel
			Bracket	Stainless steel

Position indicator



Re-adjustment available upon required direction

Shaft

- 90° Closed or Open for rotary application
- 90° Open or Closed for rotary application
- 45° Open or Closed for linear application

Conduit entries

Cable entry due to length and thickness



Captive cover bolts

cover bolts are specially designed to prevent losing it during maintenance or installation.



SWITCH SPECIFICATION

Mechanical switch (2SPDT) APL-210N



Standard switch : SS5GL(Omron)

2SPDT switches (option: spst-nc, spst-no)
Contact arrangement: 250V AC/3A, 125V AC/5A
250VDC/0.2A, 125VDC/0.4A, 30VDC/4A,

Optional switch : SS10GL(Omron)

2SPDT switches (option: spst-nc, spst-no)
Contact arrangement: 250V AC/10.1A, 125V AC/10.1A
250VDC/0.2A, 125VDC/0.4A, 30VDC/4A,

Approved standards:UL,CSA,SEMKO,SEV EN61058-1

Proximity sensor APL-220N



Standard sensor : NJ2-V3-N (P&F)

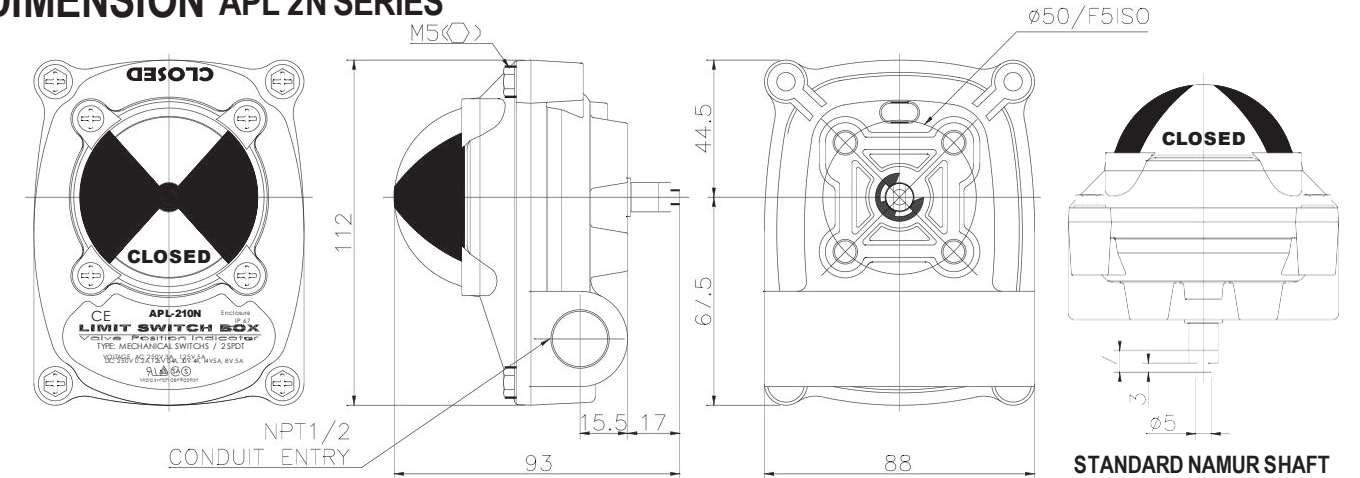
Inductive proximity sensor (intrinsically safe)
Voltage range: 8V DC (IP67 to IEC 60529)
Operating distance: 2mm

Optional sensor

EMC to EN60947-5-2

NBB2-V3-E2/E3(PNP): 10 - 30V DC Operating distance: 2mm
NBB2-V3-E0 (NPN): 10 - 30V DC Operating distance: 2mm
NBB3-V3-Z4/Z5 : 5 - 60V DC Operating distance: 3mm

DIMENSION APL 2N SERIES



BRACKET

NAMUR STANDARD



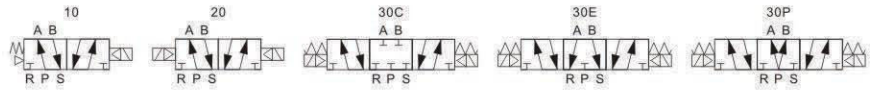
Model No	Material	Application
TC-100	Stainless steel	30x80 h20
TC-200	Stainless steel	30x80 h30
TC-300	Stainless steel	30x130 h30
TC-400	Stainless steel	30x130 h50

Solenoid Valve

4M Series



Symbol



Order Code

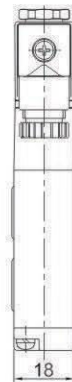
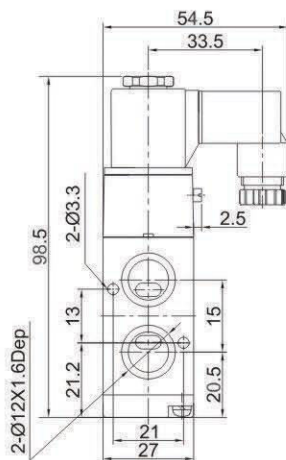
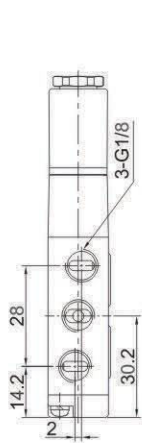
4M	1	10	-	06	/ AC220V
Specification Code 5/2(3) Port Solenoid Valve	Series 1:100 Series 2:200 Series 3:300 Series 4:400 Series	Coil & Position 10:Single Coil Double Position 20:Double Coil Double Position 30C:Double Coil Three Position Closed Type 30E:Double Coil Three Position Exhaust Type 30P:Double Coil Three Position Pressurized Type		Port Size M5:M5 x 0.8 06:G1/8 08:G1/4 10:G3/8 15:G1/2	Voltage DC12V DC24V AC24V 50/60Hz AC110V 50/60Hz AC220V 50/60Hz AC380V 50/60Hz

Technical Specification

Model	4M110-M5 4M120-M5	4M110-06 4M120-06	4M210-06 4M220-06	4M210-08 4M220-08	4M310-08 4M320-08	4M310-10 4M320-10	4M410-15 4M420-15
Working Media	Air						
Action Mode	Internal Pilot Type						
Position	5/2 Port						
Effective Sectional Area	5.5mm ² (Cv=0.31)	12.0mm ² (Cv=0.67)	14.0mm ² (Cv=0.78)	16.0mm ² (Cv=0.89)	25.0mm ² (Cv=1.40)	30.0mm ² (Cv=1.68)	50.0mm ² (Cv=2.79)
Port Size	Input=Output=M5 x 0.8	Input=Output=G1/8		Input=G1/4, Exhaust Port=G1/8	Input=Output=G1/4	Input=G3/8, Exhaust Port=G1/4	Input=Output=G1/2
Lubrication	No Need						
Working Pressure	0.15~0.8MPa						
Proof Pressure	1.0MPa						
Working Temperature	0~60°C						
Voltage Range	±10%						
Power Consumption	AC:2.8VA DC:2.8W			AC:5.5VA DC:4.8W			
Insulation Grade	F Level						
Protection Class	IP65(DIN40050)						
Connecting Type	Plug Type						
Max.Operating Frequency	5 Cycle/Sec						
Min.Excitation Time	0.05 Sec						
Material	Body		Aluminum Alloy				
	Seal		NBR				

Dimension

4M110-M5(06)



4M120-M5(06)

